

1 2 3 4 5 6 7 8

REVISIONS		
ISS	ZONE	DESCRIPTION\PER REQUEST\DATE

F

E

D

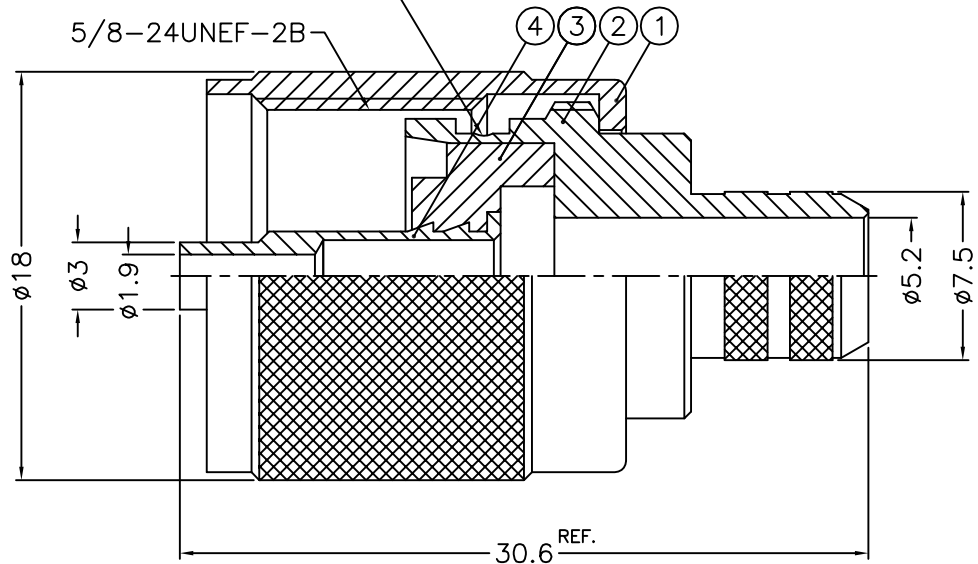
C

B

A

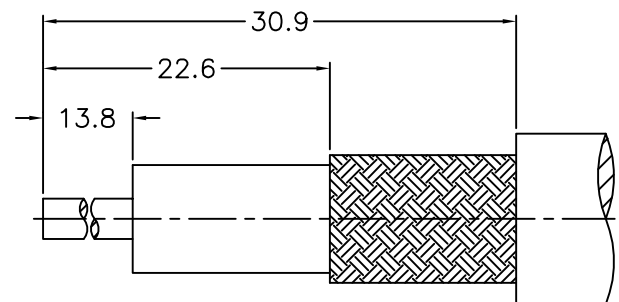
REMARK:1. NO.3 MUST WITHSTAND A 6 lbs. MIN. PUSHOUT FORCE FROM NO.2 AFTER STAKING OPERATION  
 2. REMARK 1 IS MAINTAINED BY STAMPING THE SIX POINTS SHOWN ON THE DRAWING WITHOUT PUNCTURING NO.2  
 (1. 打六點後零件3由零件2推出至少必須承受6磅推力)  
 (2. 打六點後除需符合備註1要求外且不可擊穿零件2)

STAKE IN 6 PLACES EQUALLY SPACED 60° APART  
 (打六點 間隔 60°)  
 (SEE REMARK 1,2)

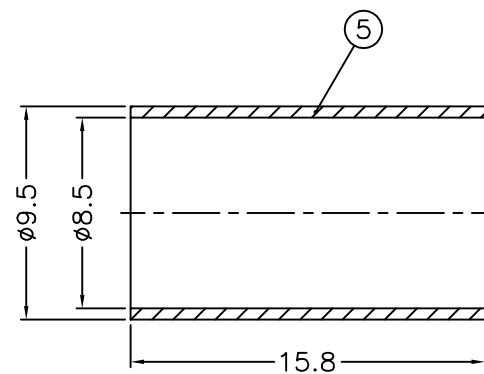


NOTES: FINISH (PLATING THICKNESS IN MICRO-INCHES)  
 1. BRASS  
 2. NICKEL PL. 100 MIN. THICK OVER COPPER PL. 50 MIN. THICK  
 3. GOLD PL. 3 MIN. THICK OVER NICKEL PL. 50 MIN. THICK OVER COPPER PL. 50 MIN. THICK  
 4. TEFLON

RoHS COMPLIANT



RECOMMENDED CABLE STRIPPING DIM'S  
 (建議剝線尺寸)



1. CRIMPED FERRULE  
 HEX CRIMP SIZE .324"  
 2. CRIMPED CONTACT PIN  
 HEX CRIMP SIZE .1"

F

E

D

C

B

A

NO.	DESCRIPTION	MATERIAL	FINISH	Q'TY	DRAWING NO.	SCALE	3/1	ISSUE	A	PART NO.	APPROVED	DATE	TITLE
5	FERRULE	NOTE 1	NOTE 2	1	FR-85-95-158	DIMENSIONS ARE IN MILLIMETERS							UHF CRIMP PLUG (FOR 5D-FB, LMR300 CABLE)
4	CONTACT PIN	NOTE 1	NOTE 3	1	600-1121A1-4 -1.9	UNLESS OTHERWISE SPECIFIED TOLERANCES							
3	INSULATOR	NOTE 4	NATURAL	1	600-1121A1-3 -50T	0.5-6 = ±0.2							
2	BODY	NOTE 1	NOTE 2	1	600-1121A1-2 -41	6-30 = ±0.4							
1	SHELL	NOTE 1	NOTE 2	1	600-1121A1-1	30-120 = ±0.6							
						120-315 = ±1							
						315-1000 = ±1.6							
						1000-2000 = ±2.4							
										ANGELA		10-28-'14	
													600-1121A1-41-50
													FILE NO. R:\D\G\DWG\600\1121A1\41\50-1

1 2 3 4 5 6 7 8