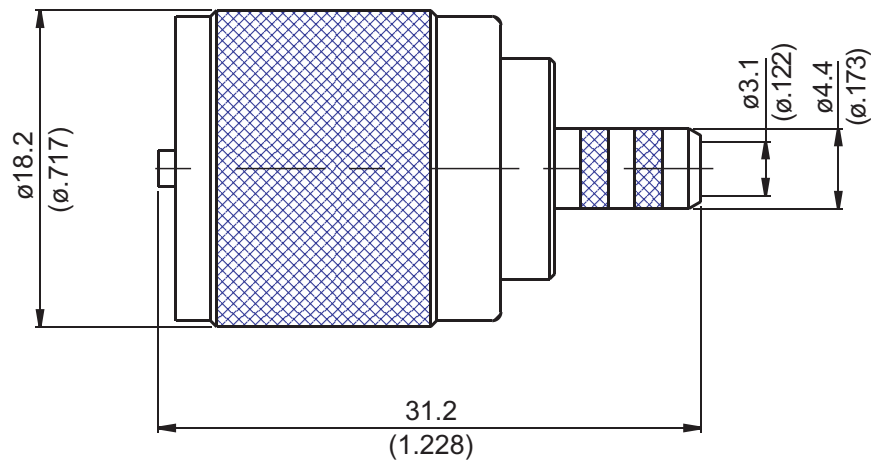


UHF3100-0058

UHF Plug Crimp



Parts	Material	Plating(Micro-inch)
Ferrule	Brass	Tin-Zinc-Copper-Alloy 100 Over Copper 50
Contact Pin	Brass	Gold 3 Over Nickel 50 Over Copper 50
Insulator	Teflon	
Body	Brass	Tin-Zinc-Copper-Alloy 100 Over Copper 50
Coupling Nut	Brass	Tin-Zinc-Copper-Alloy 100 Over Copper 50

Weight: 20.34 g  
Suitable Cables: RG58, JBY195

This part number complies with RoHS.

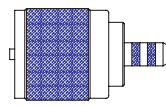
Notice: JYEBAO reserves the right to make modifications deemed appropriate.

## CABLE ASSEMBLY INSTRUCTION

UHF3100-0058

JYE BAO CO., LTD.

A



BODY

B



FERRULE

DIAGRAM	ASSEMBLY INSTRUCTION
	<p>Step 1: STRIP AS SHOWN .</p>
	<p>Step 2: SLIDE FERRULE " B " OVER CABLE.                      Step 3: LOOSEN BRAIDING AND SLIDE CONNECTOR " A " IN PLACE AND SOLDER IN " Y ".</p>
	<p>Step 4: SLIDE FERRULE " B " TOWARDS THE CONNECTOR " A " AND CRIMP.</p>

This part number complies with RoHS.

Notice: JYEBAO reserves the right to make modifications deemed appropriate.