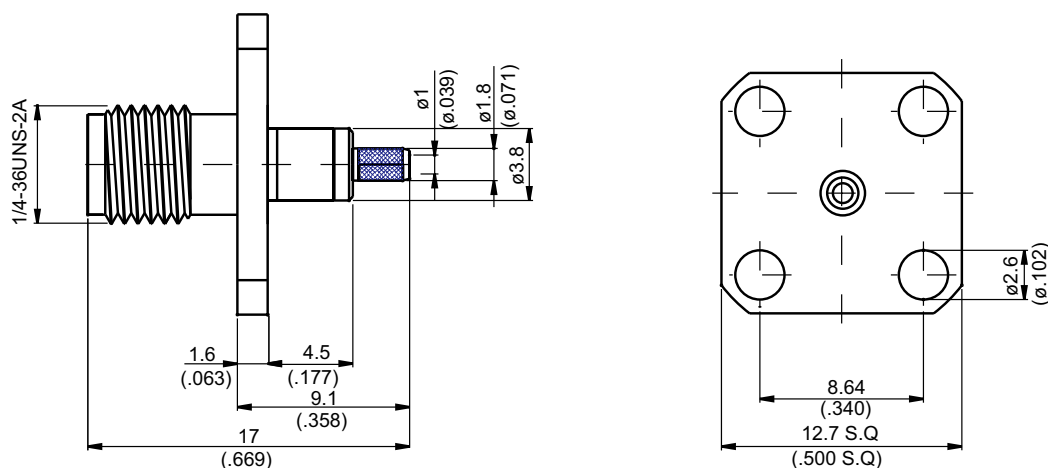
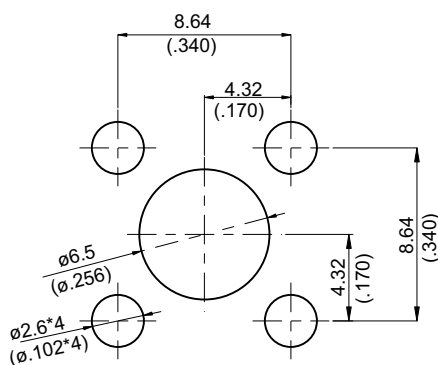


SMA8146-0178

SMA Jack Crimp For Panel Receptacle 50Ω



MOUNTING HOLE :



Parts	Material	Plating (Micro-inch)
Ferrule	Brass	Gold 5 Over Nickel 50 Over Copper 50
Contact Pin	Beryllium Copper	Gold 20 Over Nickel 50 Over Copper 50
Insulator	Teflon	
Body	Brass	Gold 5 Over Nickel 50 Over Copper 50

Weight: 3.08 g

Suitable Cables: RG178, RG196, RG178-FEP

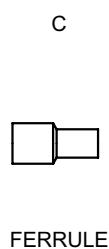
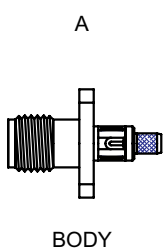
This part number complies with RoHS.

Notice: JYEBAO reserves the right to make modifications deemed appropriate.

## CABLE ASSEMBLY INSTRUCTION

SMA8146-0178

JYE BAO CO., LTD.

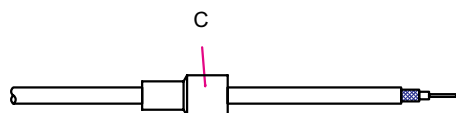


DIAGRAM

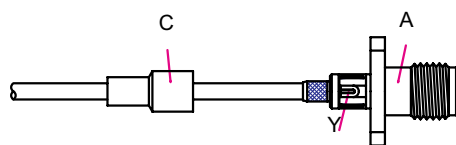
ASSEMBLY INSTRUCTION



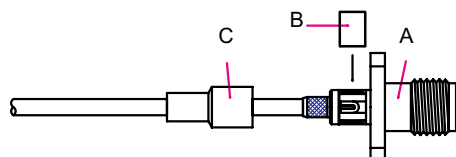
Step 1: STRIP AS SHOWN .



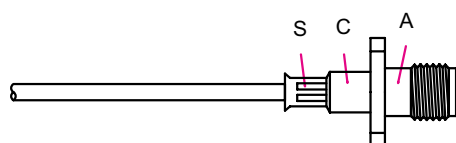
Step 2: SLIDE FERRULE " C " OVER CABLE .



Step 3: INSERT CABLE'S CENTER CONDUCTOR INTO CONNECTOR BODY " A " AND SOLDER IN " Y ".



Step 4: PUT COVER " B " ON BODY " A " .



Step 5: SLIDE FERRULE " C " TOWARDS THE CONNECTOR " A " AND CRIMP IN " S ".

This part number complies with RoHS.

Notice: JYEBAO reserves the right to make modifications deemed appropriate.